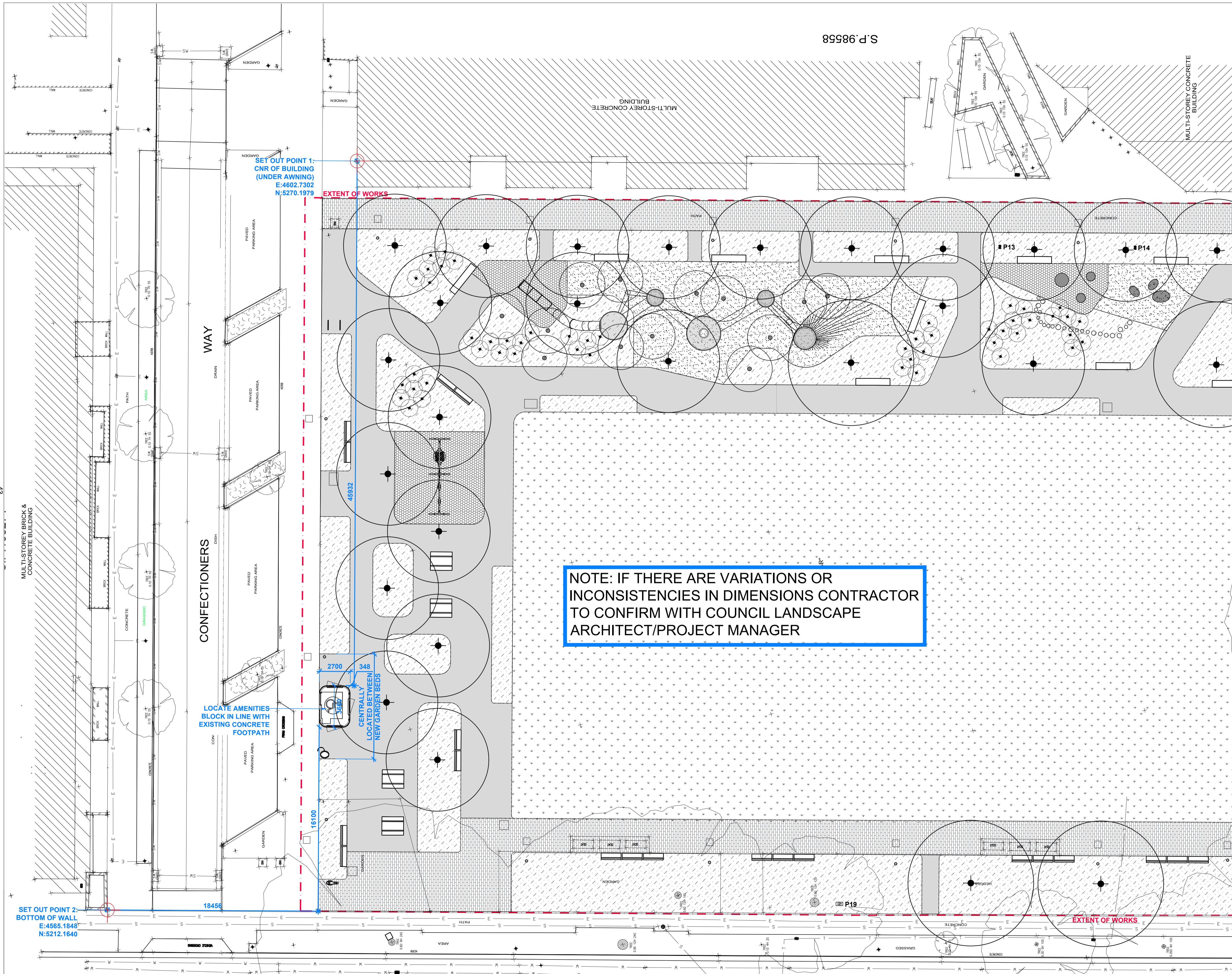


# **Attachment B**

**Selected Drawings**





S.P.98558

PACKAGE  
**FOR INFORMATION**  
 NOT FOR CONSTRUCTION

Unless otherwise indicated, all plants must be the species and cultivar indicated. Do not use cultivars when the species is specified.  
 Prior to installation of any species with a potential mature height of more than 2m ensure that there are no overhead structures that may be adversely affected by the plant's future growth or that may compromise the future health or form of the plant. Notify the Landscape Architect immediately of any possible conflict between plants and overhead structure.  
 Check all dimensions and site conditions prior to commencement of any work, the purchasing or ordering of any materials, fitting, plant services or equipment and the fabrication of any components.  
 Do not scale drawings-refer to figured dimensions only. Any discrepancies shall immediately be referred to the landscape architect for clarification.  
 All drawings may not be reproduced or distributed without prior permission from the landscape architect.  
 Drip line of existing trees defines Tree Protection Zone. Refer to Landscape Specification for requirement.

REV.	DATE	AMENDMENTS
A	30.03.2022	FOR INFORMATION

**GALLAGHERSTUDIO**  
 LEAD CONSULTANT  
 GALLAGHER STUDIO  
 Studio 4, Level 2, 151 Foveaux Street  
 Surry Hills NSW 2010  
 T: (02) 9331 8171  
 CIVIL / STORMWATER/ HYDRAULIC / STRUCTURAL  
 ENGINEERING  
 PARTRIDGE  
 Level 5, 1-5 Chancery Street  
 Sydney NSW 2005  
 T: (02) 9460 9000  
 LIGHTING ART + SCIENCE  
 Level 1, 41 Hurst St  
 Crown Point NSW 2065  
 T: (02) 8438 9988

CLIENT  
**CITY OF SYDNEY**

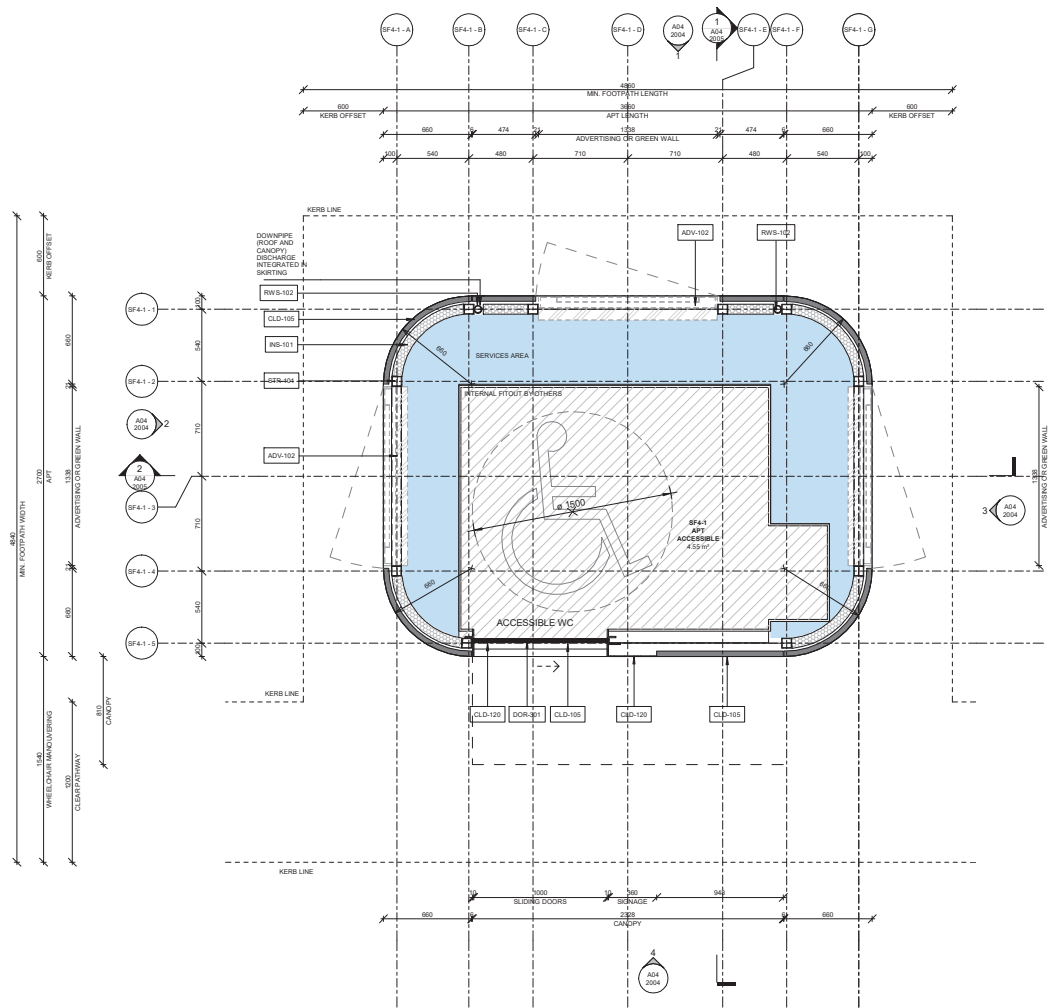
JOB  
**NORTH ROSEBERY PARK & GREEN LINK**  
 ROSEBERY NSW 2018

DRAWING TITLE  
**NORTH ROSEBERY PARK AMENITIES BLOCK SET OUT PLAN**

DRAWING NO.  
**202105-SO01**

DRAWN	CHECKED	SCALE @ A1
RL	LG	1:100
REV	DATE	
A	30.03.2022	





1 PLAN - APT - ACCESSIBLE  
1:20

ARCHITECT  
**GRIMSHAW**  
GRIMSHAW ARCHITECTS LLP  
T +61 2 9293 0200  
www.grimshaw.global

INTELLECTUAL PROPERTY  
© Copyright Grimshaw Architects. Unless otherwise agreed in writing, all rights to use this document are subject to payment in full of all Grimshaw charges. This document may only be used for the express purpose and project for which it has been created and released, as notified in writing by Grimshaw. This document may not be otherwise used, or copied. Any unauthorised use of this document is at the user's sole risk, and without limiting Grimshaw's rights the user releases and indemnifies Grimshaw from and against all loss so arising.

DRAWING NOTICES  
• Do not scale - all dimensions to be checked on site.  
• Grimshaw drawings to be read in conjunction with schedule and specifications.  
• Structural information shown on architectural drawings is indicative only. Refer to structural engineer's design drawings.  
• All dimensions shown in millimeters unless otherwise stated.

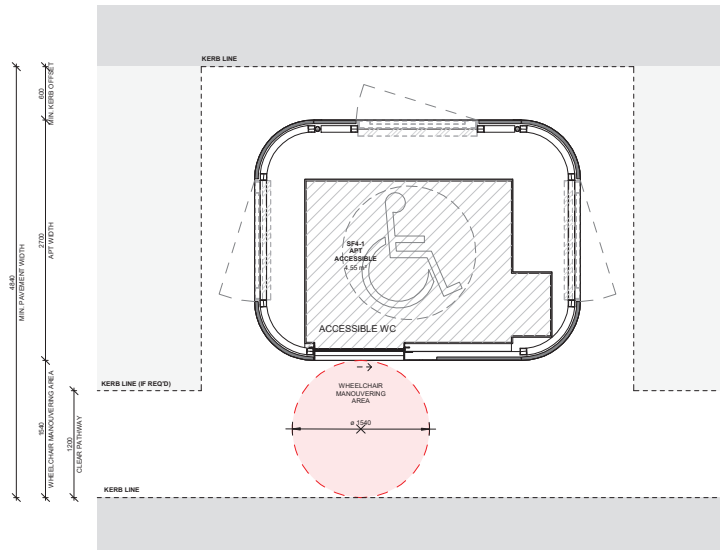
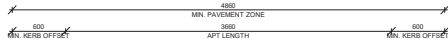
KEY:

CLIENT  
**QMS MEDIA**  
CONSULTANTS  
Lead contractor  
Structural: Civil engineers  
Electrical engineers  
Mechanical engineers  
Hydraulic engineers  
Landscape architects  
DDA/DAPT  
SCA  
Safety in Design  
Sustainability  
Signage  
Town Planning

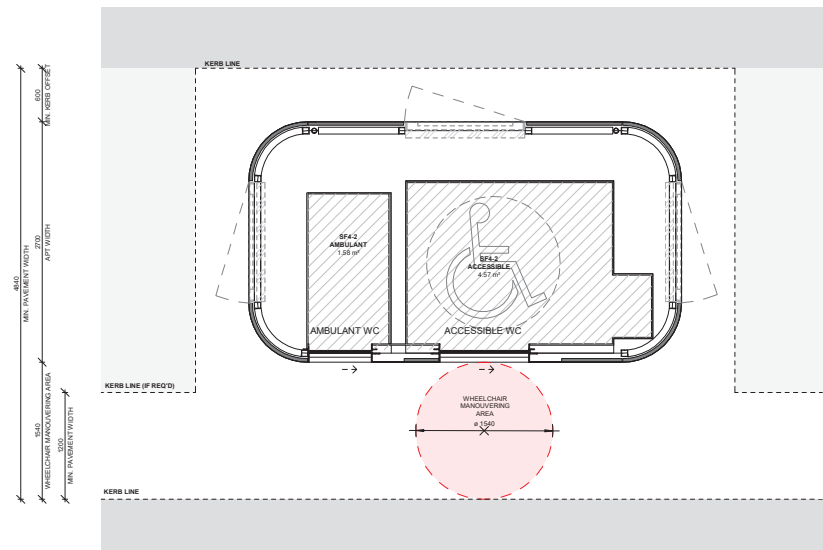
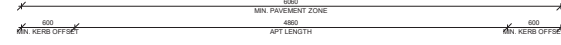
PROJECT NAME  
**CITY OF SYDNEY  
STREET FURNITURE**  
PROJECT NO.  
**20158**  
ADDRESS  
**SYDNEY, NEW  
AUSTRALIA**

REV	BY	DATE	DESCRIPTION
B	GAS	02.10.20	For Information
C	GAS	09.10.20	80% DESIGN DEVELOPMENT
D	GAS	21.12.20	For Information
E	GAS	06.02.21	Work In Progress for Information
F	GAS	12.02.21	80% DESIGN DEVELOPMENT (SF3-1, SF4-1, SF4-2, & 80% DESIGN DEVELOPMENT (SF3-2)
G	GAS	06.08.21	DA - APT

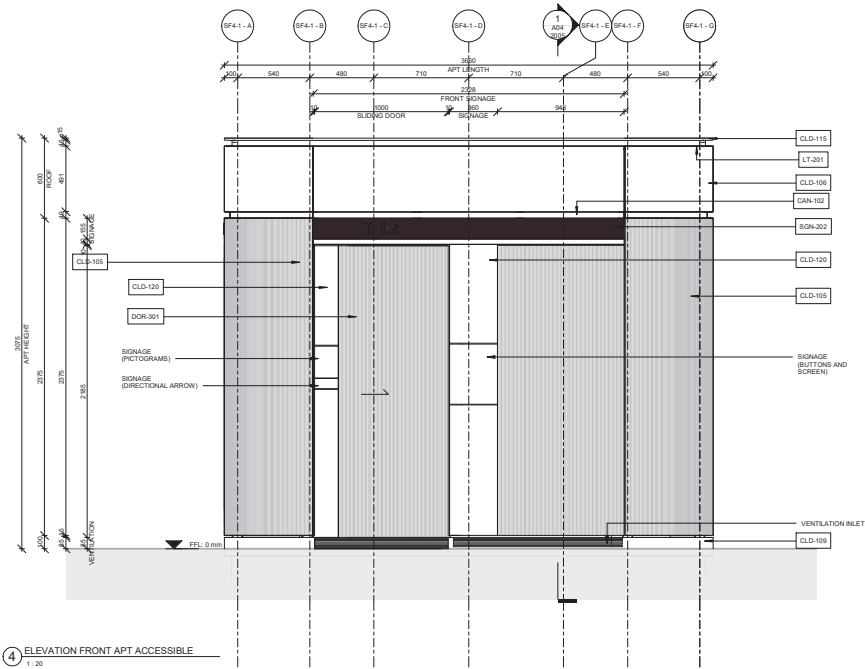
NOTES  
DRAWING TITLE  
**APT ACCESSIBLE - SF4-1 - PLAN**  
SCALE  
**1 : 20 @A1**  
STATUS  
**PRELIMINARY**  
DRAWN BY  
**GA KJ MG**  
APPROVED BY  
**06.08.21**  
REVISED BY  
**G**



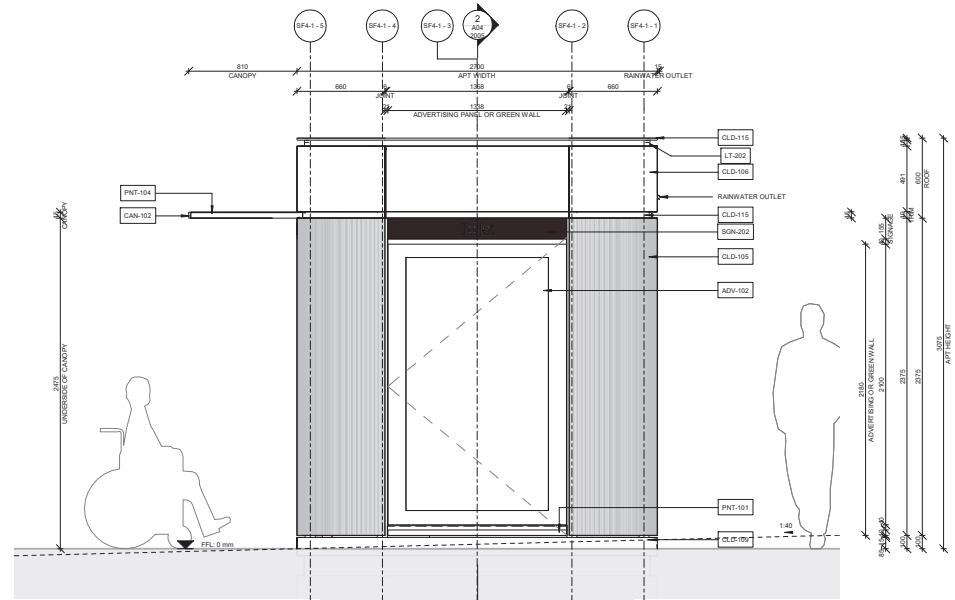
1 SETOUT PLAN - APT - ACCESSIBLE  
1:30



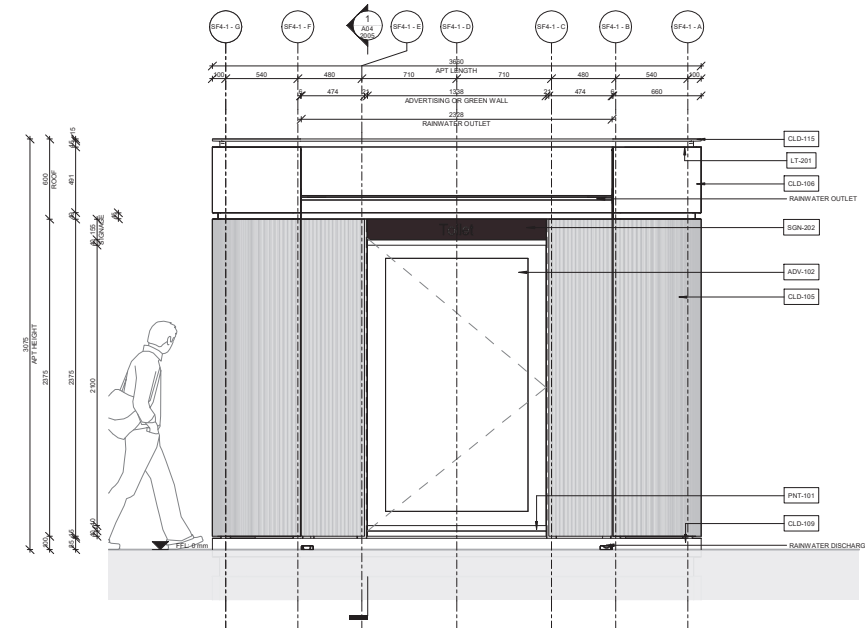
2 SETOUT PLAN - APT - AMBULANT + ACCESSIBLE  
1:30



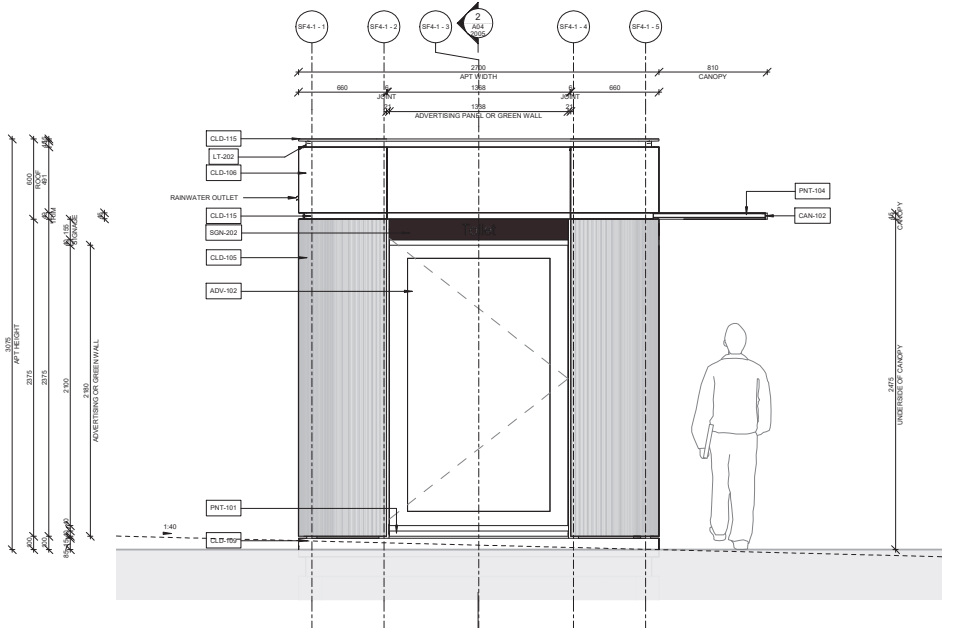
4 ELEVATION FRONT APT ACCESSIBLE  
1:20



3 ELEVATION LATERAL APT ACCESSIBLE  
1:20



1 ELEVATION BACK APT ACCESSIBLE  
1:20



2 ELEVATION LATERAL APT ACCESSIBLE  
1:20

46

GRIMSHAW ARCHITECTS LLP  
T +61 2 9293 0200  
www.grimshaw.global

**INTELLECTUAL PROPERTY**  
© Copyright Grimshaw Architects. Unless otherwise agreed in writing, all rights to use this document are subject to payment in full of Grimshaw charges. This document may only be used for the express purpose and project for which it has been created and released, in reliance on writing by Grimshaw. This document may not be otherwise used, or copied. Any unauthorised use of this document is at the user's sole risk, and without limiting Grimshaw's rights the user releases and indemnifies Grimshaw from and against all loss so arising.

**DRAWING NOTICES**  
• Do not scale - all dimensions to be checked on site.  
• Grimshaw drawings to be used in conjunction with Grimshaw and specialist consultant's drawings, reports, schedules and specifications.  
• Structural information shown on architectural drawings is indicative only. Refer to structural engineer's design drawings.  
• All dimensions shown in millimeters unless otherwise stated.

**KEY:**

**CLIENT**  
QMS MEDIA

**CONSULTANTS**  
Lead contractor  
Structural: Civil engineers  
Electrical engineers  
Mechanical engineers  
Hydraulic engineers  
Landscape architects  
DDA/DAPT  
SCA  
Safety in Design  
Sustainability  
Signage  
Town Planning

Radius Displays  
DBCC  
E&C  
Stoma  
Akuma Engineering  
Electrigh  
Olive Access  
Steve Watson & Partners  
Consults  
Edge Environment  
Maynard  
McCreck

**PROJECT NAME**  
CITY OF SYDNEY  
STREET FURNITURE

**PROJECT NO.**  
20158

**ADDRESS**  
SYDNEY, NEW AUSTRALIA

REV	BY	DATE	DESCRIPTION
B	GAS	02.10.20	For Information
C	GAS	09.10.20	80% DESIGN DEVELOPMENT
D	GAS	22.12.20	For Information
E	GAS	05.02.21	Work In Progress for Information
F	GAS	12.02.21	80% DESIGN DEVELOPMENT (SF3-1, SF4-1, SF4-2, & 80%) DESIGN DEVELOPMENT (SF3-2)
G	GAS	06.08.21	DA - APT

**DRAWING TITLE**  
APT ACCESSIBLE - SF4-1 - ELEVATIONS

**SCALE**  
1 : 20 @A1

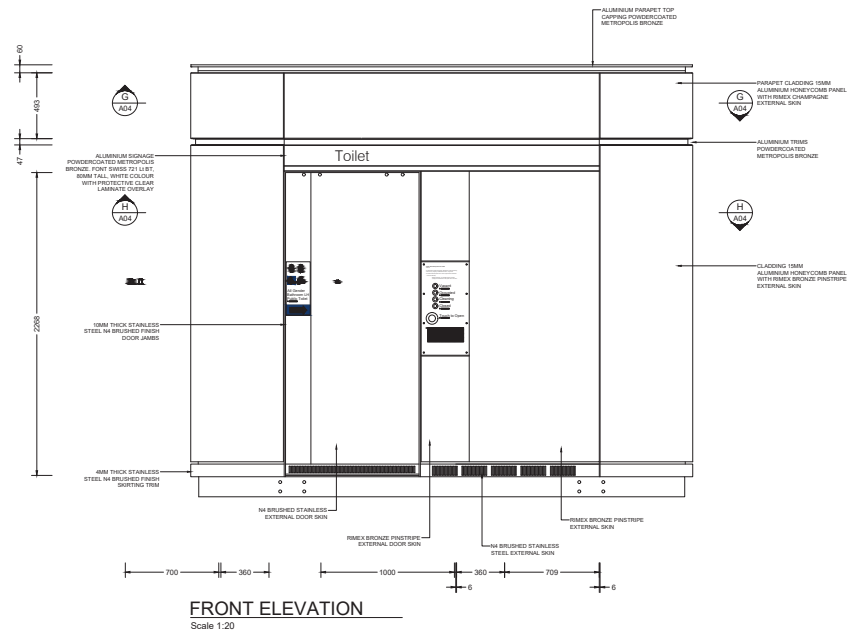
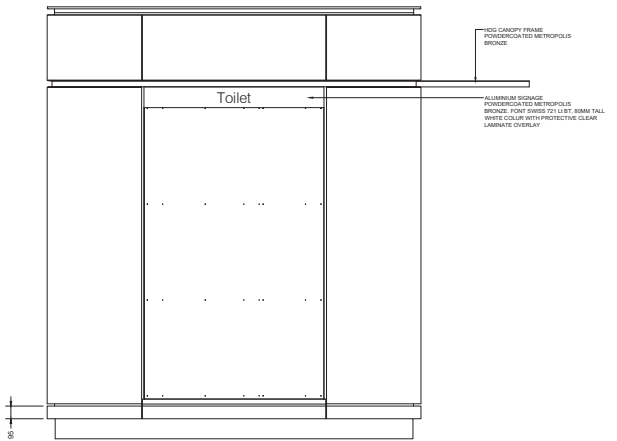
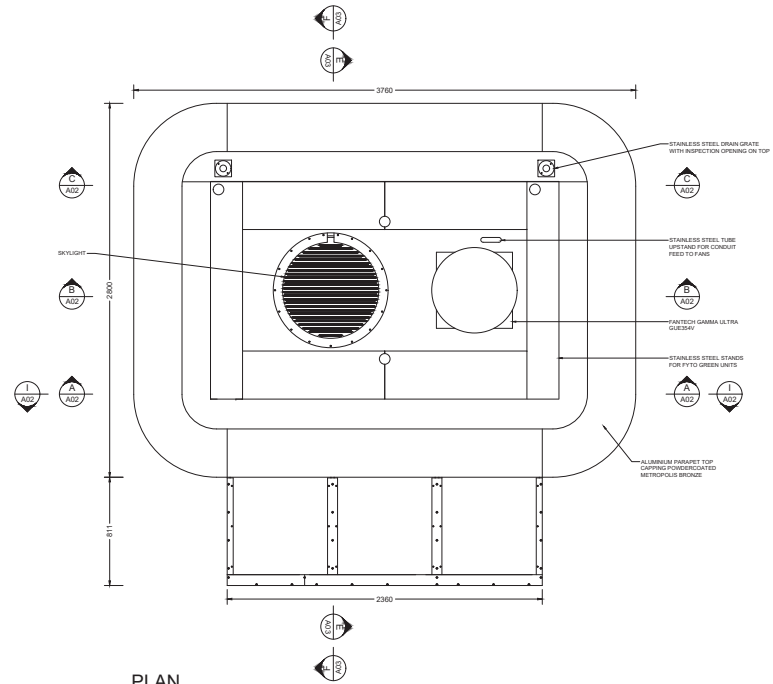
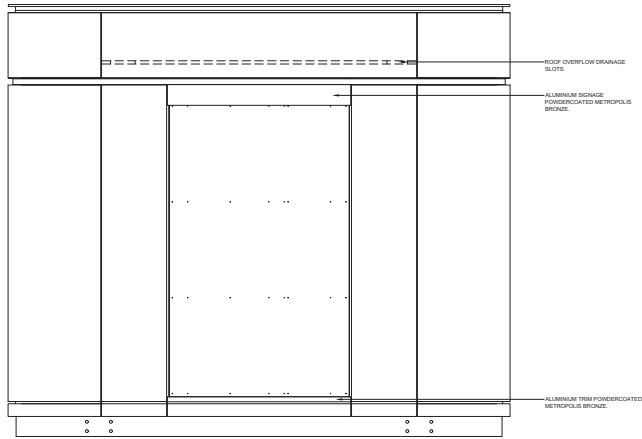
**STATUS**  
PRELIMINARY

**DRAWING NO.**  
A04 2004

**DRW** CH APPR  
GA KJ MG

**DEV DATE**  
06.08.21

**REV**  
G



47

0 10 20 30 40  
DO NOT SCALE FROM THESE DRAWINGS

CAD - DO NOT AMEND MANUALLY

**pureblue**  
complete solution solutions  
Copyright Reserved: This drawing is the property of Fabrications and is subject to reuse upon approval. It is submitted for your information with proposals or contracts of this nature. Upon the issuance of a contract it will be the client's responsibility to ensure the accuracy of the information provided to the relevancy of Fabrications.

T: (02) 8772 3810  
F: (02) 8772 8723  
PO Box 5002  
Ayrmore NSW 2350

Certifying Engineer

Project  
**QMS MEDIA  
APT1**

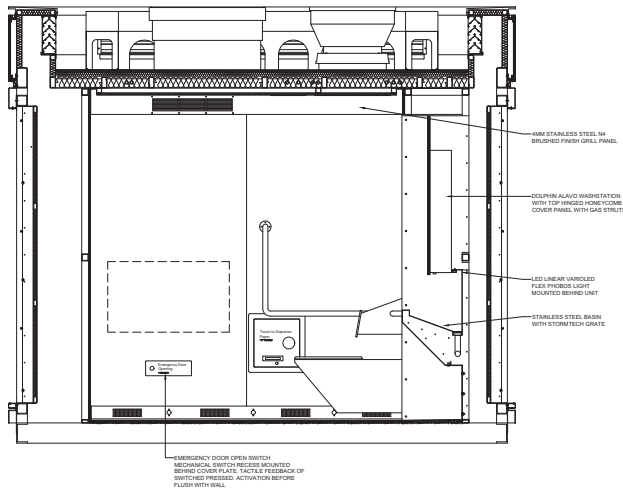
Drawing Title  
**DETAILS**

No.	Revision	Date
A	PRELIMINARY	15.12.22
B	PRELIMINARY	02.02.23

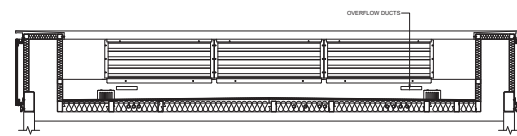
Designed: JW  
Drawn: JW  
Date: 02.02.23

Scale: N/A  
CAD File: N/A

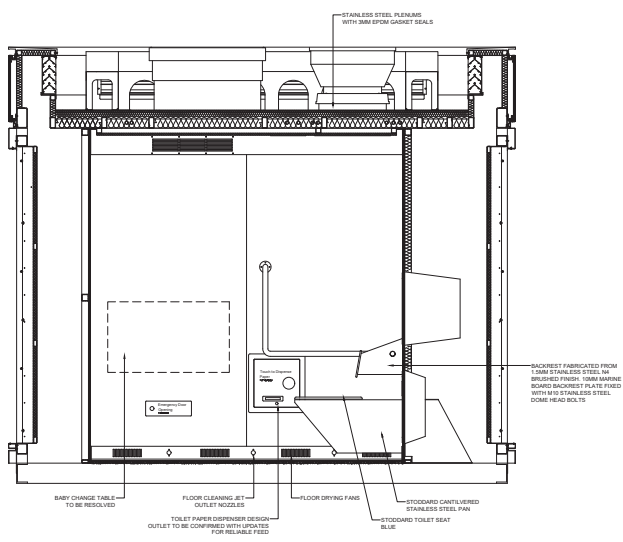
Project No: **APT1**  
Drawing No: **A01**  
Revision: **B**



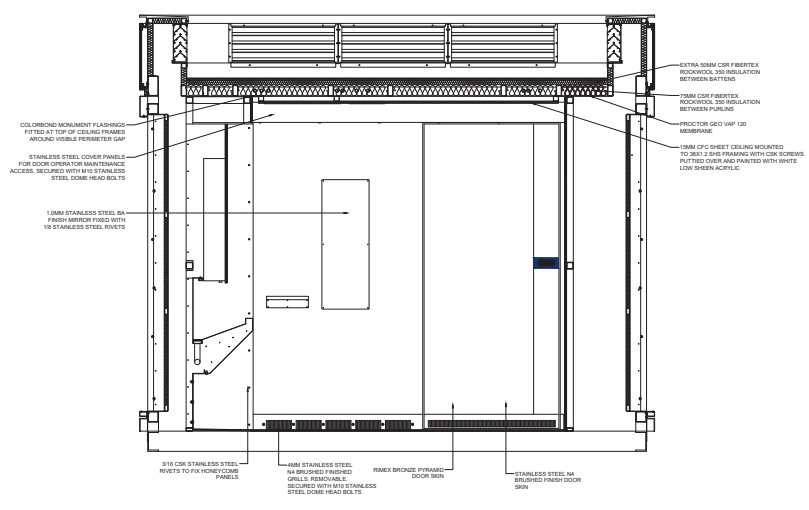
SECTION B  
Scale 1:50



SECTION C  
Scale 1:50



SECTION A  
Scale 1:50



SECTION I  
Scale 1:50

0 10 20 30 40  
DO NOT SCALE FROM THESE DRAWINGS

CAD - DO NOT AMEND MANUALLY



complete solution solutions  
T: (02) 8772 3810  
F: (02) 8772 8723  
PO Box 5002  
Aurora NSW 2150

Copyright Reserved: This drawing is the property of Pureblue and is subject to their usual terms and conditions. It is submitted for use only in connection with proposals or contracts of the organization. Once the contract is awarded it is not to be used for any other purpose without the written consent of Pureblue.

Consulting Engineer

Project  
QMS MEDIA  
APT1

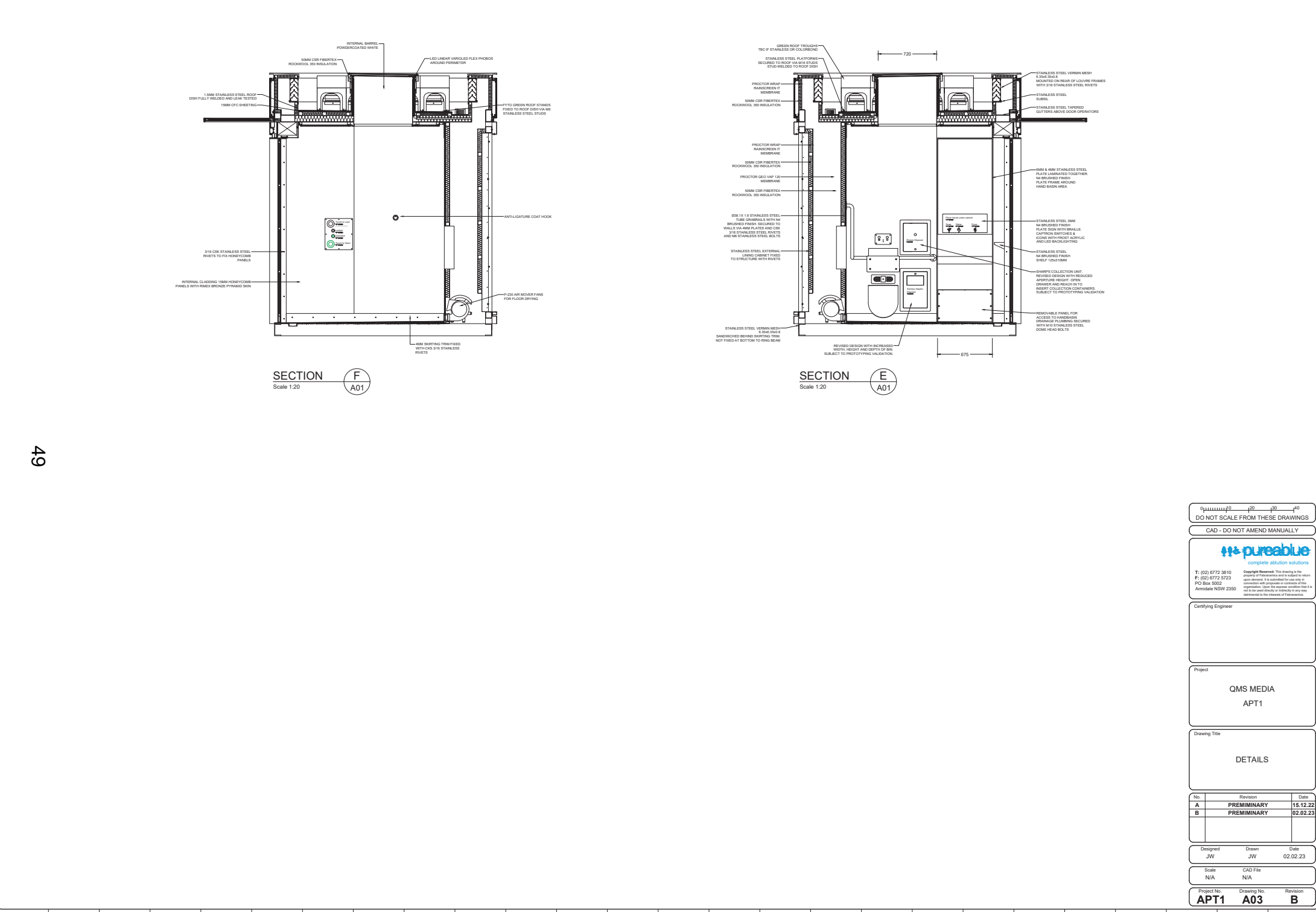
Drawing Title  
DETAILS

No.	Revision	Date
A	PRELIMINARY	15.12.22
B	PRELIMINARY	02.02.23

Designed: JW  
Drawn: JW  
Date: 02.02.23

Scale: CAD File  
N/A

Project No. APT1  
Drawing No. A02  
Revision B



SECTION F  
Scale 1:20

SECTION E  
Scale 1:20

0 10 20 30 40  
DO NOT SCALE FROM THESE DRAWINGS

CAD - DO NOT AMEND MANUALLY

**pureblue**  
complete solution solutions

T: (02) 8772 2810  
F: (02) 8772 8723  
PO Box 5002  
Aurora NSW 2350

Copyright Reserved: This drawing is the property of Fabrication and is subject to review upon delivery. It is submitted for use only in connection with proposals or contracts of this organization. Upon the issuance of order this is not to be used, copied, or modified in any way detrimental to the interests of Fabrication.

Certifying Engineer

Project  
**QMS MEDIA  
APT1**

Drawing Title  
**DETAILS**

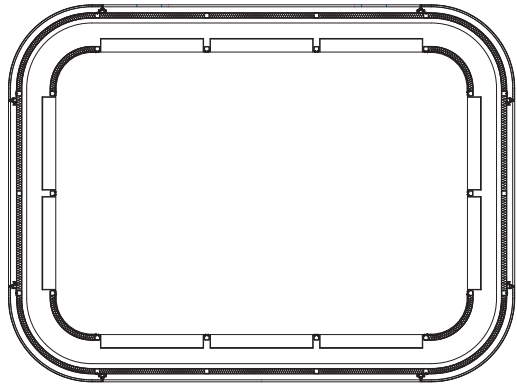
No.	Revision	Date
A	PRELIMINARY	15.12.22
B	PRELIMINARY	02.02.23

Designed: JW      Drawn: JW      Date: 02.02.23

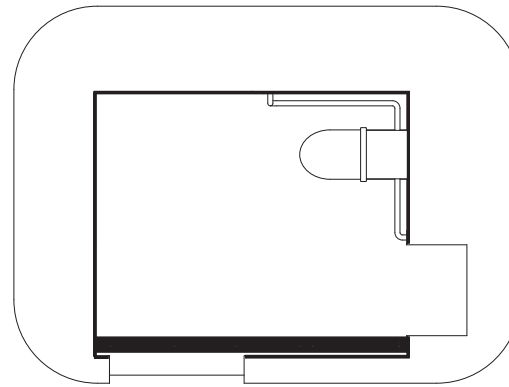
Scale: CAD File      N/A

Project No: **APT1**      Drawing No: **A03**      Revision: **B**

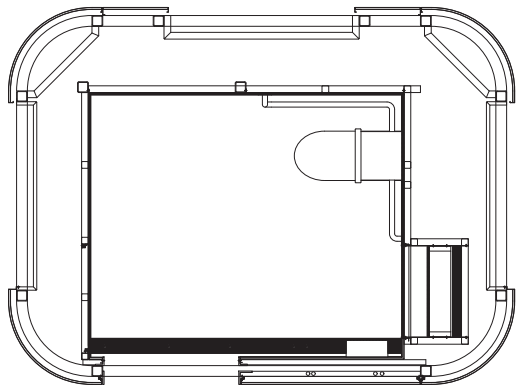




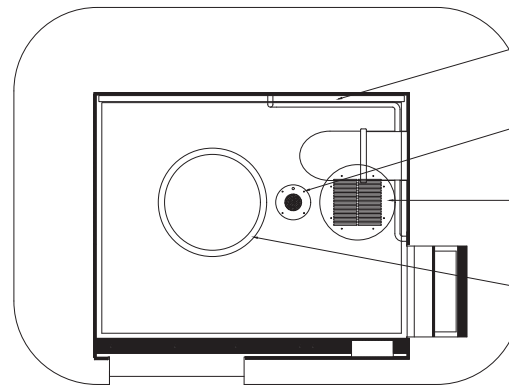
SECTION G  
Scale 1:20



INTERNAL FLOOR PLAN  
Scale 1:20



SECTION H  
Scale 1:20



REFLECTED CEILING PLAN  
Scale 1:20

- COOLON AIR - ELECTRIC P.  
DOW 3.16x3.16x1.18mm (1/8"x1/8"x3/16")
- 4MM GRILL PLATE FOR  
SPRINKLER AND DETECTOR SENSOR.  
316 STAINLESS STEEL.  
POWDERCOATED WHITE.  
SECURED WITH GSK  
M6 STAINLESS STEEL ALLEN  
KEY BOLTS
- 4MM GRILL PLATE FOR  
EXTRACTION FAN. STAINLESS  
STEEL. POWDERCOATED  
WHITE. SECURED WITH GSK  
M6 STAINLESS STEEL ALLEN  
KEY BOLTS
- STAINLESS STEEL  
SPRINKLER TRIM SECURED  
WITH US STAINLESS CONE  
HEAD BOLTS

50

0 10 20 30 40  
DO NOT SCALE FROM THESE DRAWINGS

CAD - DO NOT AMEND MANUALLY

**pureablie**  
complete solution solutions

T: (02) 8772 3810  
F: (02) 8772 8723  
PO Box 5002  
Ayrmore NSW 2350

Copyright Reserved: This drawing is the property of Pureablie and is subject to reuse upon demand. It is submitted for use only in connection with proposals or contracts of this organization. Upon the issuance of order this is not to be used, copied, or modified in any way detrimental to the interests of Pureablie.

Certifying Engineer

Project  
**QMS MEDIA  
APT1**

Drawing Title  
**DETAILS**

No.	Revision	Date
A	PRELIMINARY	15.12.22
B	PRELIMINARY	02.02.23

Designed: JW  
Drawn: JW  
Date: 02.02.23

Scale: N/A  
CAD File: N/A

Project No: **APT1**  
Drawing No: **A04**  
Revision: **B**

# APT Signage

## Door signage

51

Icon of a woman and a man standing side-by-side.  
 Icon of a woman and a man with a cane walking side-by-side.

**All Gendered  
Public Toilet**  
 ▯ #####

Hyde Park Macquarie St Toilet  
 APT2001

○ Vacant  
 ▯ #####

○ Occupied  
 ▯ #####

○ Cleaning  
 ▯ #####

○ Closed  
 ▯ #####

**Touch to Open**  
 ▯ #####

For maintenance, facilities and property management, repairs and clearing contact the City of Sydney on 9269 9333, 24 hours, 7 day a week.  
 The nearest alternative public toilet is near the Hyde Park St James Road - a 3-minute walk away.  
 National Toilet Map – for information about the location, opening times and features of other public toilets in the area.

▯ #####

Icon of a woman and a man standing side-by-side.  
 Icon of a person in a wheelchair and a person with a baby in a stroller.

**All Gendered  
Bathroom LH  
Public Toilet**  
 ▯ #####

1600 AFFL

---

1200 AFFL

---

900 AFFL

---

52



ARCHITECT  
**GRIMSHAW**

GRIMSHAW ARCHITECTS LLP  
T +61 2 9253 0200 Level 2, 333 George Street  
www.grimshaw.global Sydney, NSW 2000, AUS

**INTELLECTUAL PROPERTY**

© Copyright Grimshaw Architects. Unless otherwise agreed in writing, all rights to use this document are subject to payment in full of all Grimshaw charges. This document may only be used for the express purpose and project for which it has been created and released, in reliance on writing by Grimshaw. This document may not be otherwise used, or copied. Any unauthorised use of this document is at the user's sole risk and without limiting Grimshaw's rights the user releases and indemnifies Grimshaw from and against all loss so arising.

**DRAWING NOTICES**

- Do not scale - all dimensions to be checked on site.
- Grimshaw drawings to be read in conjunction with Grimshaw and specialist consultant's drawings, reports, schedules and specifications.
- Structural information shown on architectural drawings is indicative only. Refer to structural engineer's design drawings.
- All dimensions shown in millimeters unless otherwise stated.

**KEY:**

**CLIENT**  
QMS MEDIA

**CONSULTANTS**

- Lead contractor: DISCE
- Structural: Civil engineers
- Electrical engineers
- Mechanical engineers
- Hydraulic engineers
- Lighting designers: DDA/D&A/P
- SCA
- Safety in Design
- Sustainability
- Signage
- Town Planning

- Radius Displays
- DISCE
- E&E C
- Elume
- Akuma Engineering
- Electrigh
- OnView Access
- Steve Watson & Partners
- Conesale
- Edge Environment
- Maynard
- Microwe

**PROJECT NAME**  
CITY OF SYDNEY  
STREET FURNITURE

**PROJECT NO.** 20158  
**ADDRESS** SYDNEY, NEW AUSTRALIA

REV	BY	DATE	DESCRIPTION
A	GAS	12.02.21	80% DESIGN DEVELOPMENT (SP3-1, SP4-1, SP4-2) & 60% DESIGN DEVELOPMENT (SP3-2)
B	GAS	06.08.21	DA - APT

**NOTES**

**DRAWING TITLE**  
APT - COVER SHEET

**SCALE**  
@A1  
STATUS  
PRELIMINARY

DRW	CH	APPR	DRW DATE	REV
GA	KJ	MG	06.08.21	B

**DRAWING NO.**  
A04 1000



## APT ADVERTISING SIGNAGE PANEL DIMENSIONS AND SPECIFICATIONS

Table - Dimensions of Proposed Signage Panels	
Measurement (mm)	Proposed Signage panels
Panel Height	2100 mm
Panel Width	1338 mm
Visible Screen size	1895 x 1066 mm
Visible Screen area	2.02 m <sup>2</sup>

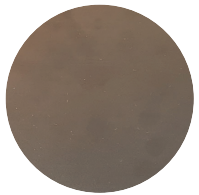


Digital Signage Panel Dimensions. NTS (Source: Dynascan)

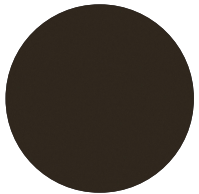
# APT Finishes

## External

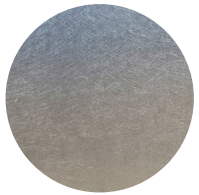
54



**External high level cladding**  
Rimex INCO Champagne Granex



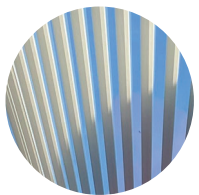
**Roof capping**  
Paint to match Metropolis Bronze



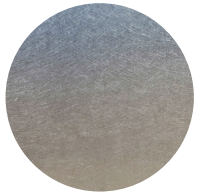
**Door external cladding**  
Brushed 4BF, 316 stainless steel



**External low level cladding**  
Rimex INCO Bronze Pinstripe



**Canopy**  
Clear, low iron glass with white ceramic frit



**Skirtings**  
Brushed 4BF, 316 stainless steel with machined openings

